

S.W. 1/4 OF N.E. 1/4 OF  
SECTION 4, T.6N.,R.1., S.L.B. & M.

3-3

IN OGDEN CITY & NORTH OGDEN CITY

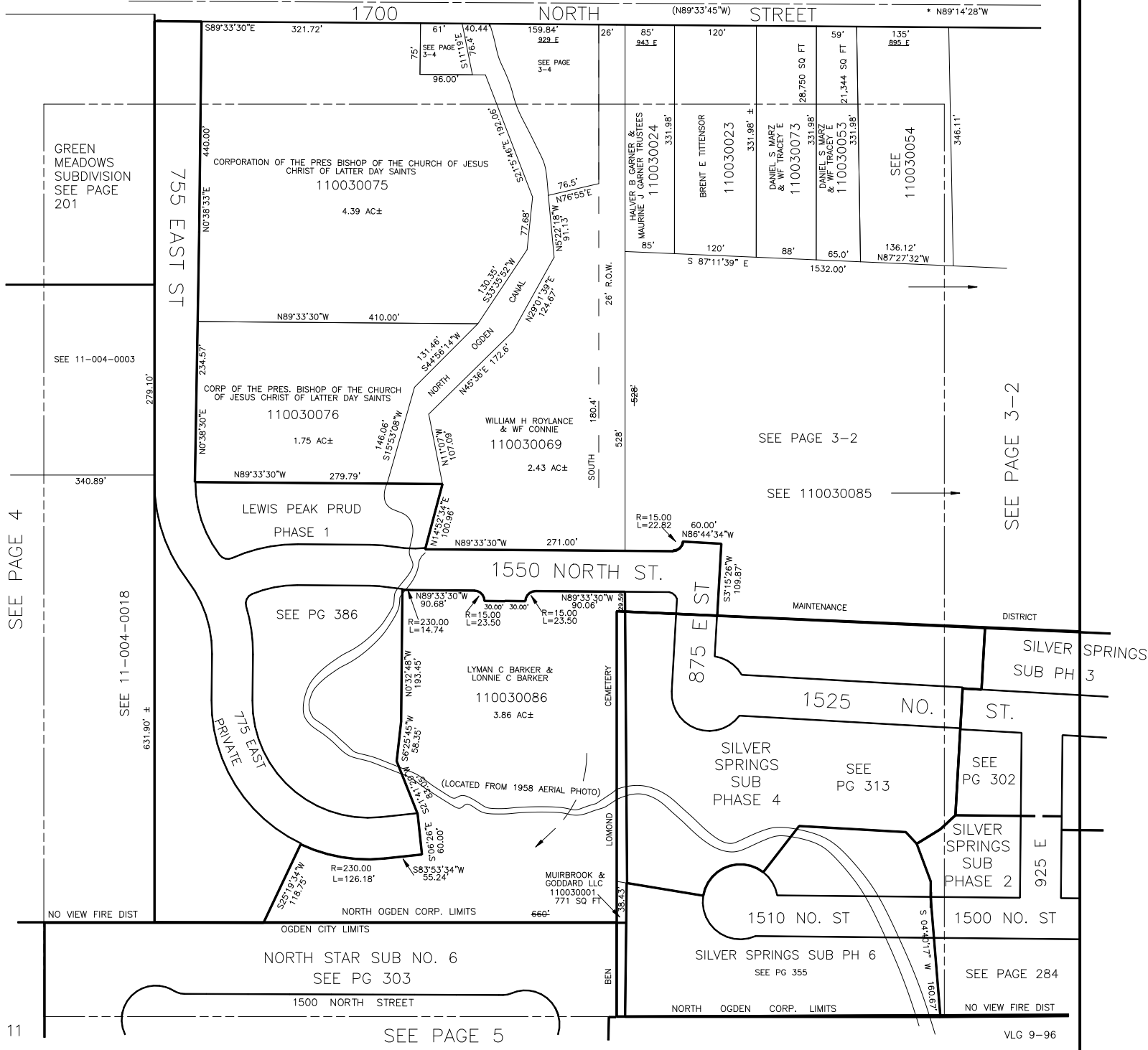
PREFIX 11-003

TAXING UNIT: 10

SEE PAGE 3-4

SCALE 1" = 100'

SEE ALSO PAGES 3-4



SEE PAGE 4

11

SEE PAGE 3-2

SEE PAGE 5

VLG 9-96